

Performance Report for: https://hrxtemplate.com/presta/v3_natural_99/en/

Report generated: Fri, Jul 22, 2022 3:22 AM -0700
 Test Server Location: Vancouver, Canada
 Using: Chrome (Desktop) 98.0.4758.102, Lighthouse 9.3.1



Top Issues

IMPACT	AUDIT	
High	Reduce initial server response time <small>FCP LCP</small>	Root document took 751ms
Med	Avoid an excessive DOM size <small>TBT</small>	1,947 elements
Med-Low	Serve static assets with an efficient cache policy	Potential savings of 124KB
Low	Use passive listeners to improve scrolling performance	2 event listeners not passive
Low	Properly size images	Potential savings of 4.35KB

Page Details



Total Page Size - 1.44MB



Total Page Requests - 60



HTML JS CSS IMG Video Font Other

How does this affect me?

Today's web user expects a fast and seamless website experience. Delivering that fast experience can result in increased visits, conversions and overall happiness.

As if you didn't need more incentive, **Google has announced that they are using page speed in their ranking algorithm.**

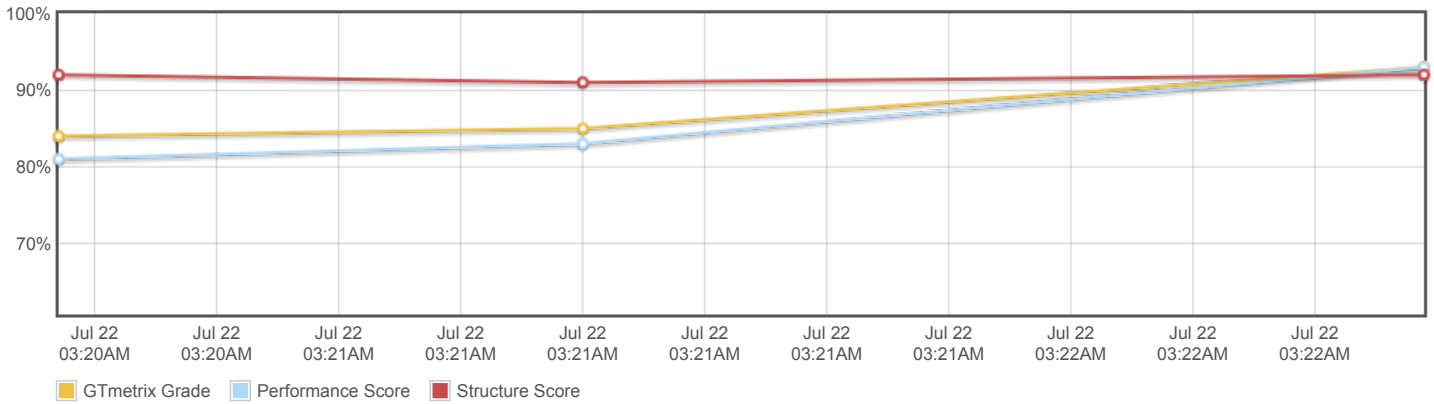
About GTmetrix



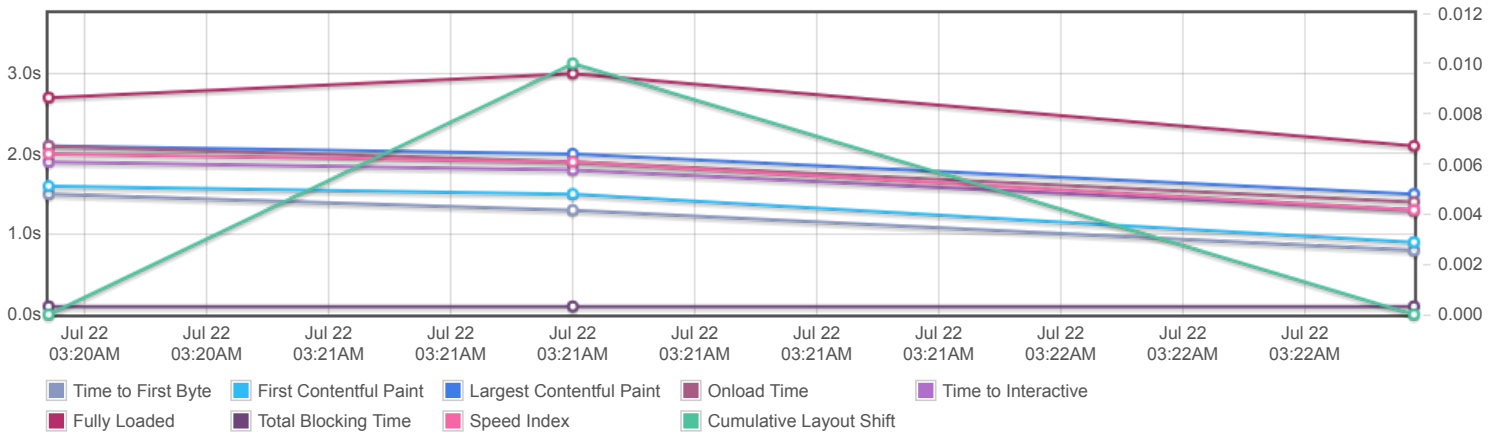
GTmetrix is developed by the good folks at Carbon60, a Canadian hosting company with over 26 years experience in web technology.

<https://carbon60.com/>

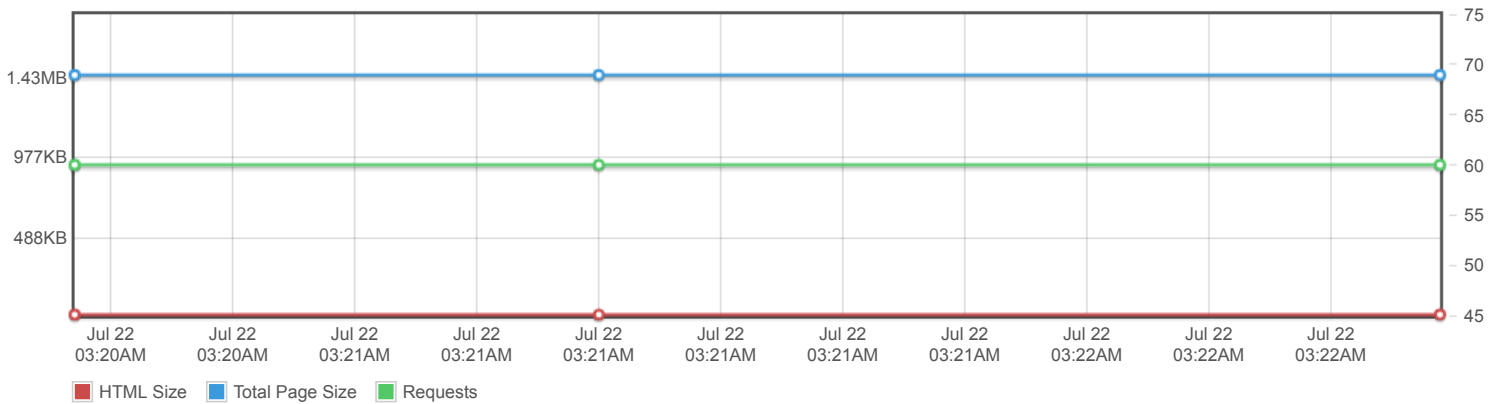
Page scores



Page metrics

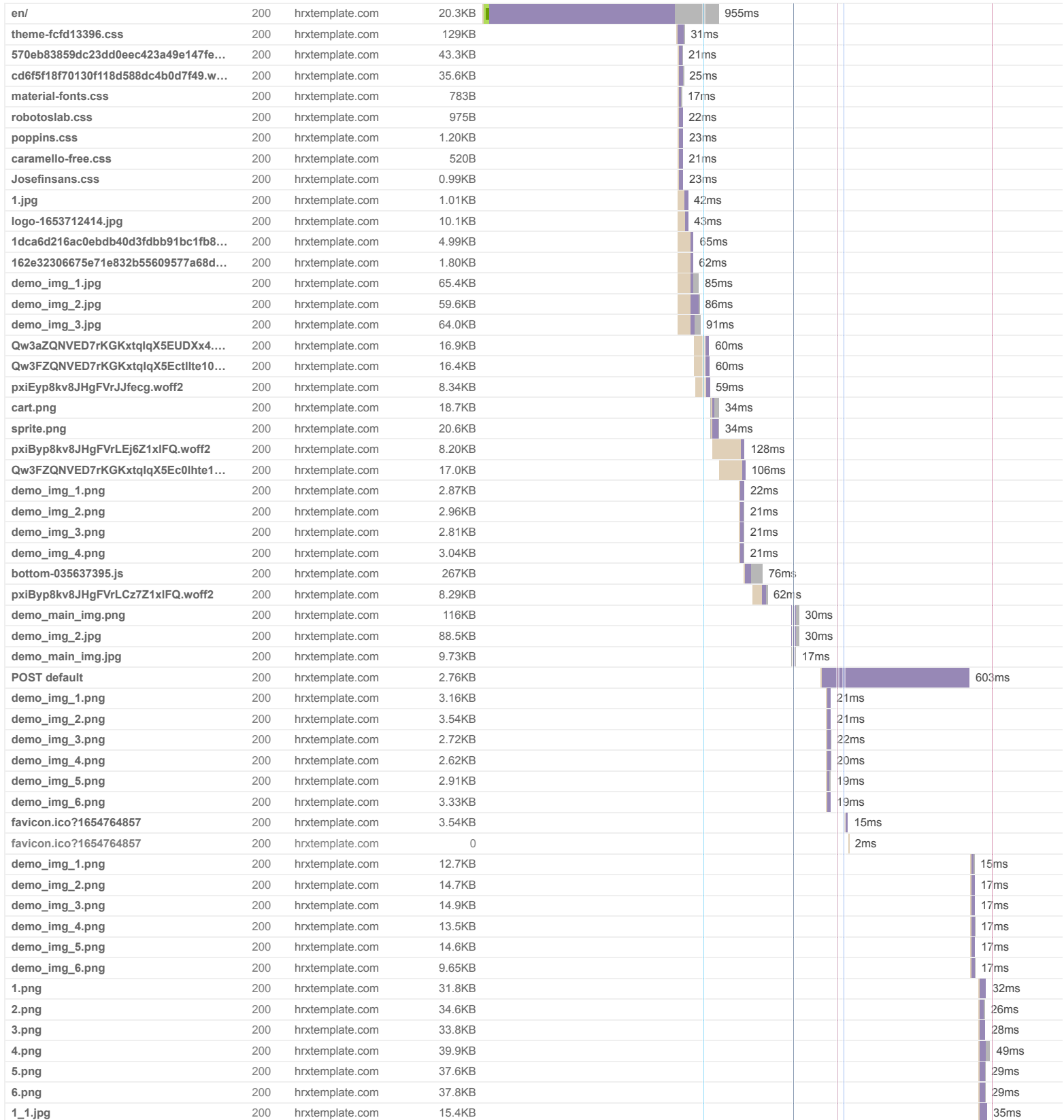


Page sizes and request counts

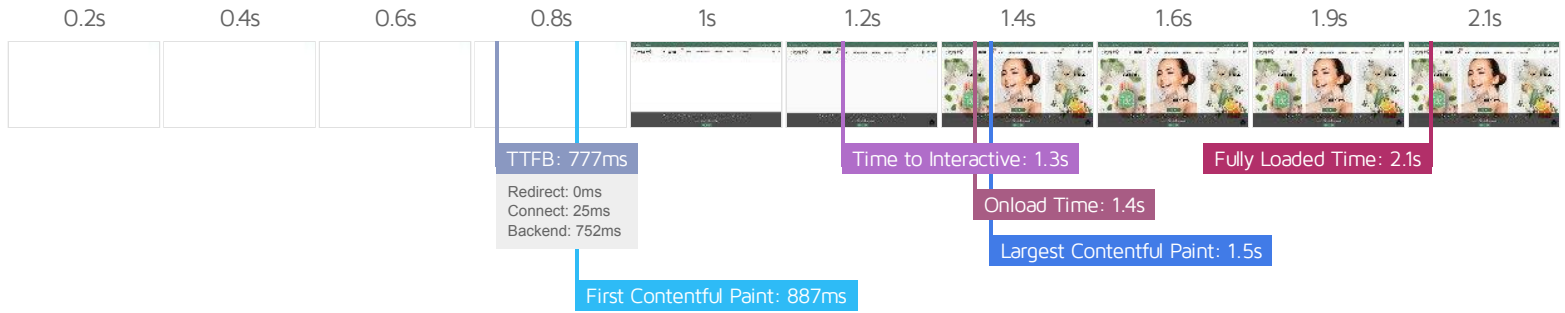


The waterfall chart displays the loading behaviour of your site in your selected browser. It can be used to discover simple issues such as 404's or more complex issues such as external resources blocking page rendering.

Natural Beauty Store



2_1.jpg	200	hrxtemplate.com	14.4KB						35ms
3_1.jpg	200	hrxtemplate.com	16.4KB						49ms
Menu_Banner.jpg	200	hrxtemplate.com	40.2KB						49ms
bundle-t-shirt.jpg	200	hrxtemplate.com	7.03KB						48ms
t-shirt.jpg	200	hrxtemplate.com	6.37KB						49ms
blouse.jpg	200	hrxtemplate.com	7.61KB						49ms
60 Requests 1.44MB (2.91MB Uncompressed) 2.1s (Onload 1.4s)									



Performance Metrics

<p>First Contentful Paint</p> <p>How quickly content like text or images are painted onto your page. A good user experience is 0.9s or less.</p>	<p>Good - Nothing to do here</p> <p>887ms</p>	<p>Time to Interactive</p> <p>How long it takes for your page to become fully interactive. A good user experience is 2.5s or less.</p>	<p>Good - Nothing to do here</p> <p>1.3s</p>
<p>Speed Index</p> <p>How quickly the contents of your page are visibly populated. A good user experience is 1.3s or less.</p>	<p>Good - Nothing to do here</p> <p>1.3s</p>	<p>Total Blocking Time</p> <p>How much time is blocked by scripts during your page loading process. A good user experience is 150ms or less.</p>	<p>Good - Nothing to do here</p> <p>104ms</p>
<p>Largest Contentful Paint</p> <p>How long it takes for the largest element of content (e.g. a hero image) to be painted on your page. A good user experience is 1.2s or less.</p>	<p>OK, but consider improvement</p> <p>1.5s</p>	<p>Cumulative Layout Shift</p> <p>How much your page's layout shifts as it loads. A good user experience is a score of 0.1 or less.</p>	<p>Good - Nothing to do here</p> <p>0</p>

Browser Timings

Redirect	0ms	Connect	25ms	Backend	752ms
TTFB	777ms	First Paint	887ms	DOM Int.	1.2s
DOM Loaded	1.2s	Onload	1.4s	Fully Loaded	2.1s

IMPACT	AUDIT	
High	Reduce initial server response time <small>FCP LCP</small>	Root document took 751ms
Med	Avoid an excessive DOM size <small>TBT</small>	1,947 elements
Med-Low	Serve static assets with an efficient cache policy	Potential savings of 124KB
Low	Use passive listeners to improve scrolling performance	2 event listeners not passive
Low	Properly size images	Potential savings of 4.35KB
Low	Eliminate render-blocking resources <small>FCP LCP</small>	Potential savings of 7ms
Low	Reduce unused CSS <small>FCP LCP</small>	Potential savings of 118KB
Low	Reduce unused JavaScript <small>LCP</small>	Potential savings of 187KB
Low	Avoid enormous network payloads <small>LCP</small>	Total size was 1.44MB
Low	Efficiently encode images	Potential savings of 4.25KB
Low	Ensure text remains visible during webfont load <small>FCP LCP</small>	2 fonts found
Low	Avoid long main-thread tasks <small>TBT</small>	2 long tasks found
Low	Reduce JavaScript execution time <small>TBT</small>	289ms spent executing JavaScript
Low	Serve images in next-gen formats	Potential savings of 495KB
Low	Avoid serving legacy JavaScript to modern browsers <small>TBT</small>	Potential savings of 91B
Low	Defer offscreen images	Potential savings of 18.2KB
Low	Avoid non-composited animations <small>CLS</small>	23 animated elements found
Low	Avoid chaining critical requests <small>FCP LCP</small>	2 chains found
N/A	Largest Contentful Paint element <small>LCP</small>	1 element found
N/A	Avoid large layout shifts <small>CLS</small>	5 elements found
N/A	Minimize main-thread work <small>TBT</small>	Main-thread busy for 910ms
N/A	User Timing marks and measures	
N/A	Reduce the impact of third-party code <small>TBT</small>	