

Performance Report for:

https://hrx.themevolty.com/v3\_jovets\_392/en/

Report generated: Fri, Jul 19, 2024 11:35 PM -0700

Test Server Location: Vancouver, Canada

Using: Chrome 117.0.0.0, Lighthouse 11.0.0

<div>A</div>	Performance	Structure	L. Contentful Paint	T. Blocking Time	C. Layout Shift
	97%	92%	802ms	129ms	0.01

Top Issues

Med-High	Avoid an excessive DOM size	TBT	2,158 elements
Med	Serve static assets with an efficient cache policy		Potential savings of 1.09MB
Low	Use passive listeners to improve scrolling performance		1 event listener not passive
Low	Avoid enormous network payloads	LCP	Total size was 1.49MB
Low	Properly size images		Potential savings of 60.2KB

Focus on these audits first

These audits likely have the largest impact on your page performance.

Structure audits do not directly affect your Performance Score, but improving the audits seen here can help as a starting point for overall performance gains.

Page Details



Total Page Size - 1.49MB



Total Page Requests - 54



How does this affect me?

Modern web users have a short attention span and expect a fast and seamless website experience. Delivering that fast experience can result in more traffic, more conversions, and more happiness.

As if you didn't need more incentive, **Google use Page Speed and Page Experience (including Web Vitals) signals in their ranking algorithm.**

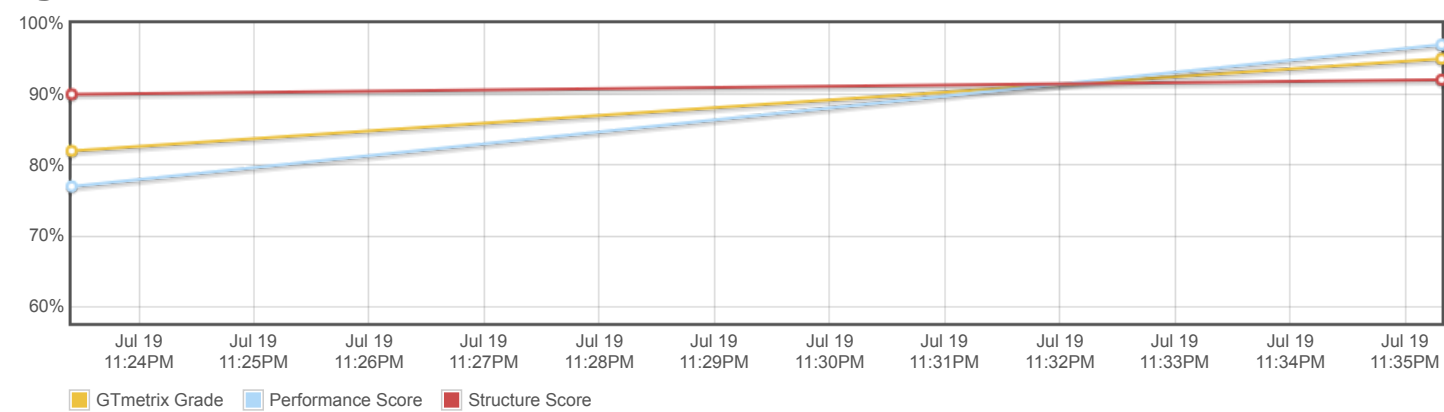
About GTmetrix

GTmetrix

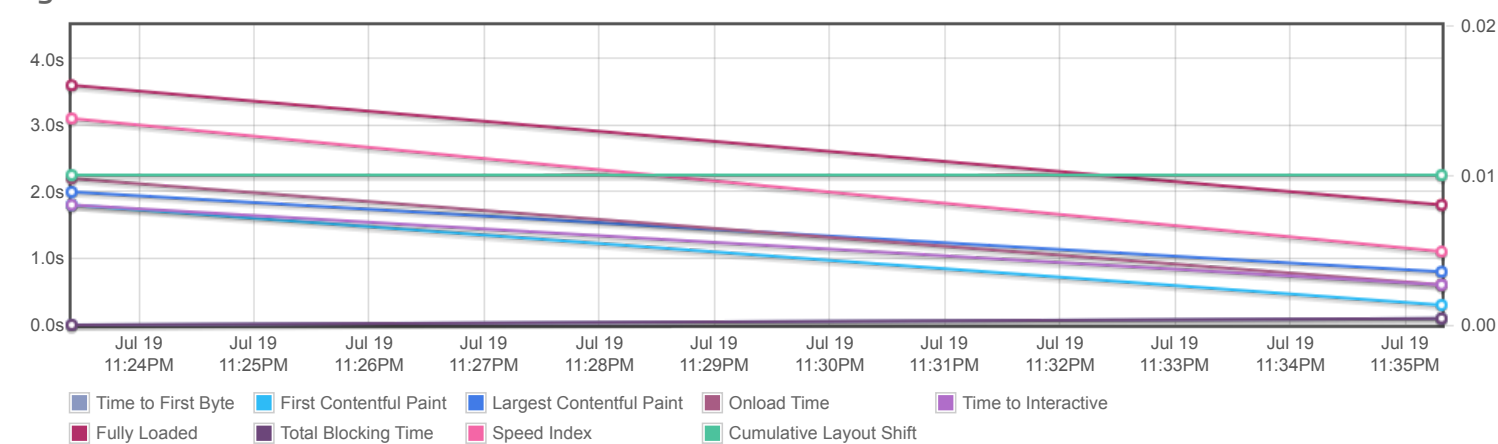
GTmetrix was developed as a tool for customers to easily test the performance of their webpages.

[Learn more about us.](#)

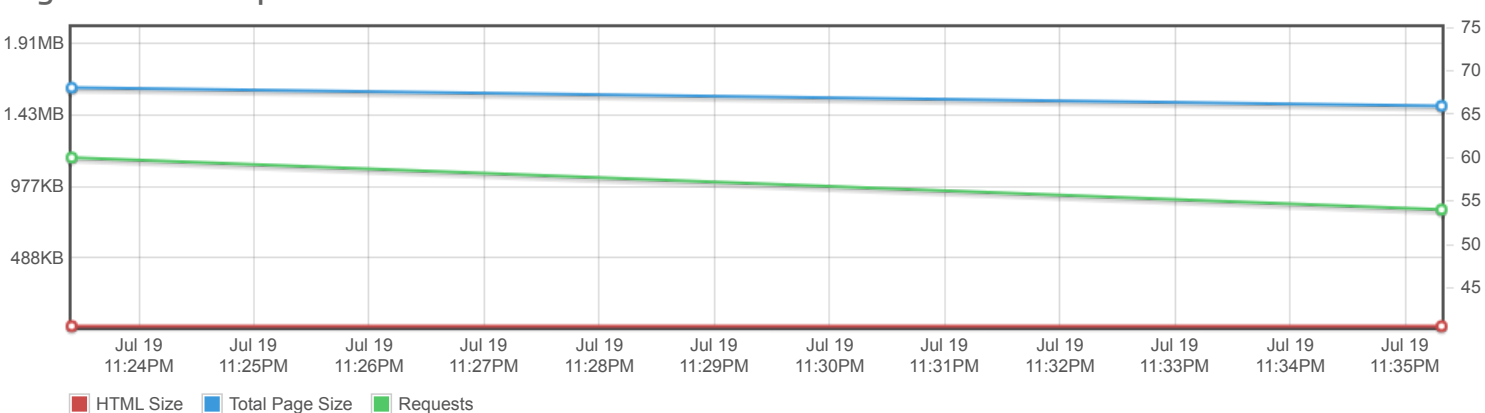
Page scores



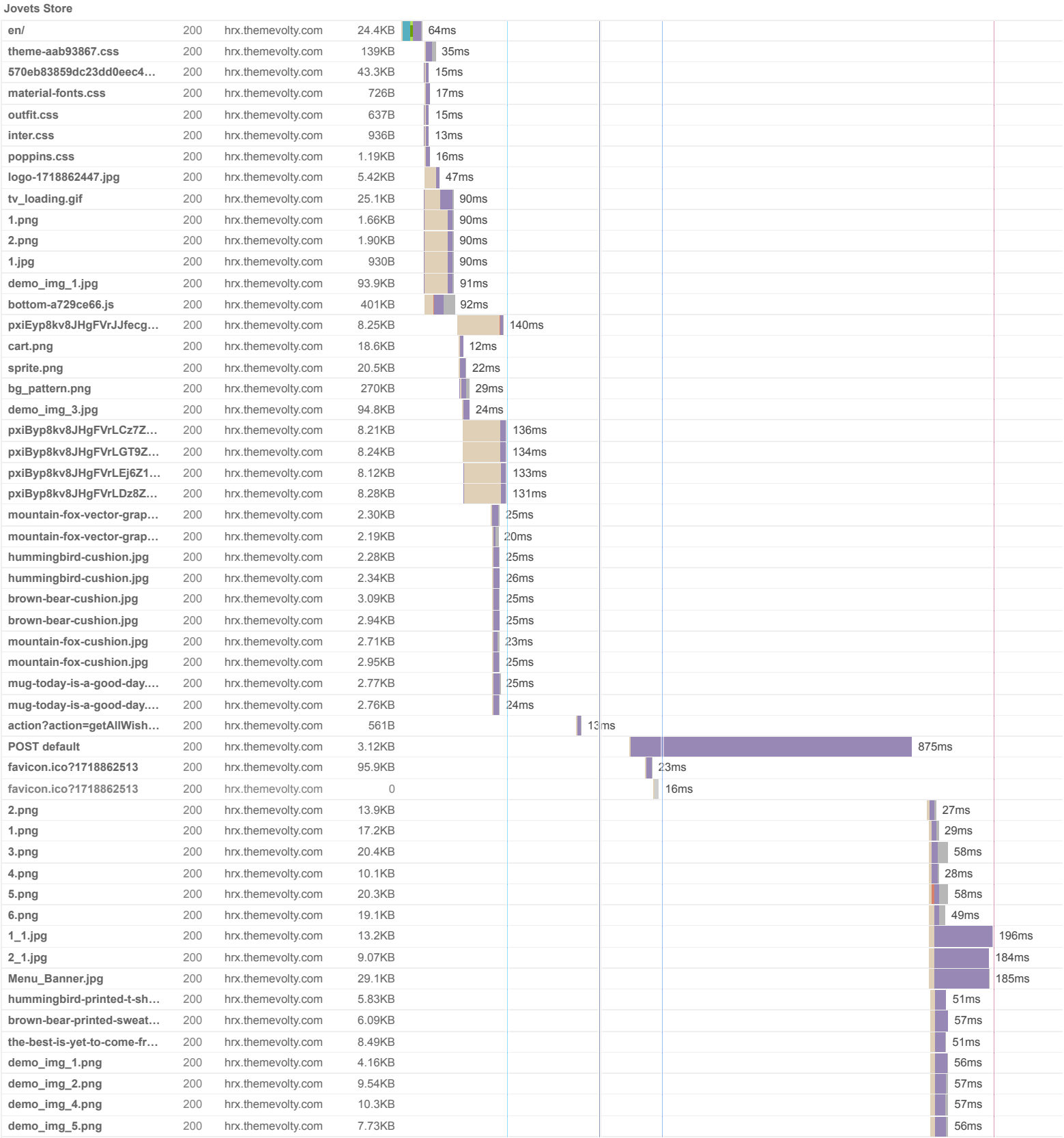
Page metrics



Page sizes and request counts

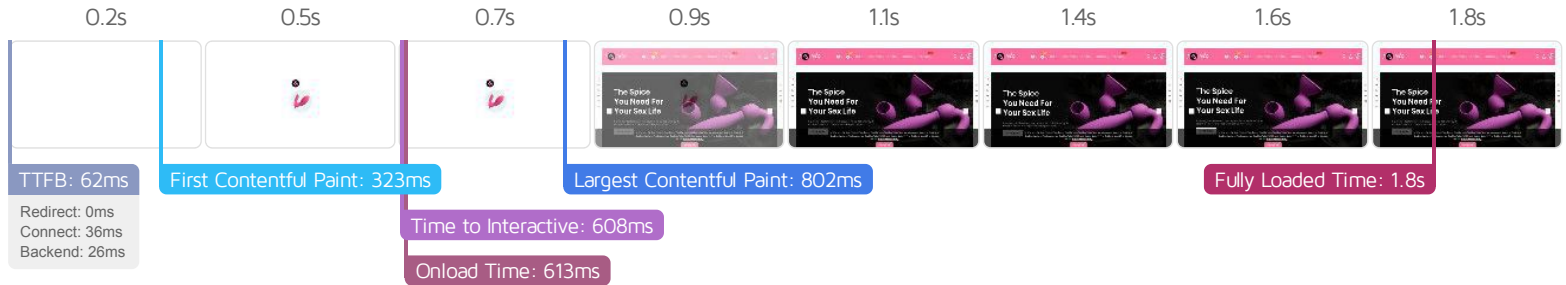


The waterfall chart displays the loading behaviour of your site in your selected browser. It can be used to discover simple issues such as 404's or more complex issues such as external resources blocking page rendering.



demo_img_6.png	200	hrx.themevolt.com	8.86KB				14ms
----------------	-----	-------------------	--------	--	--	--	------

54 Requests 1.49MB (3.61MB Uncompressed) Fully Loaded 1.8s (Onload 613ms)



## Performance Metrics

<b>First Contentful Paint</b> How quickly content like text or images are painted onto your page. A good user experience is 0.9s or less.	Good - Nothing to do here <b>323ms</b>	<b>Time to Interactive</b> How long it takes for your page to become fully interactive. A good user experience is 2.5s or less.	Good - Nothing to do here <b>607ms</b>
<b>Speed Index</b> How quickly the contents of your page are visibly populated. A good user experience is 1.3s or less.	Good - Nothing to do here <b>1.1s</b>	<b>Total Blocking Time</b> How much time is blocked by scripts during your page loading process. A good user experience is 150ms or less.	Good - Nothing to do here <b>129ms</b>
<b>Largest Contentful Paint</b> How long it takes for the largest element of content (i.e., a hero image) to be painted on your page. A good user experience is 1.2s or less.	Good - Nothing to do here <b>802ms</b>	<b>Cumulative Layout Shift</b> How much your page's layout shifts as it loads. A good user experience is a score of 0.1 or less.	Good - Nothing to do here <b>0.01</b>

## Browser Timings

Redirect	0ms	Connect	36ms	Backend	26ms
TTFB	62ms	First Paint	323ms	DOM Int.	606ms
DOM Loaded	608ms	Onload	613ms	Fully Loaded	1.8s

IMPACT	AUDIT	
Med-High	<b>Avoid an excessive DOM size</b> TBT	2,158 elements
Med	<b>Serve static assets with an efficient cache policy</b>	Potential savings of 1.09MB
Low	<b>Use passive listeners to improve scrolling performance</b>	1 event listener not passive
Low	<b>Avoid enormous network payloads</b> LCP	Total size was 1.49MB
Low	<b>Properly size images</b>	Potential savings of 60.2KB
Low	<b>Ensure text remains visible during webfont load</b> FCP LCP	1 font found
Low	<b>Avoid long main-thread tasks</b> TBT	2 long tasks found
Low	<b>Reduce JavaScript execution time</b> TBT	307ms spent executing JavaScript
Low	<b>Reduce unused CSS</b> FCP LCP	Potential savings of 126KB
Low	<b>Serve images in next-gen formats</b>	Potential savings of 436KB
Low	<b>Defer offscreen images</b>	Potential savings of 240KB
Low	<b>Avoid non-composited animations</b> CLS	2 animated elements found
Low	<b>Avoid chaining critical requests</b> FCP LCP	2 chains found
Low	<b>Reduce unused JavaScript</b> LCP	Potential savings of 251KB
N/A	<b>Largest Contentful Paint element</b> LCP	800 ms
N/A	<b>Eliminate render-blocking resources</b> FCP LCP	Potential savings of 0 ms
N/A	<b>Reduce initial server response time</b> FCP LCP	Root document took 25ms
N/A	<b>Avoid serving legacy JavaScript to modern browsers</b> TBT	Potential savings of 63B
N/A	<b>Avoid large layout shifts</b> CLS	2 elements found
N/A	<b>Minimize main-thread work</b> TBT	Main-thread busy for 1.0s
N/A	<b>User Timing marks and measures</b>	
N/A	<b>Reduce the impact of third-party code</b> TBT	