



Performance Report for:

https://hrxtemplate.com/presta/v3_duckhorn_152/en/

Report generated: Tue, Nov 1, 2022 5:37 AM -0700
 Test Server Location: Vancouver, Canada
 Using: Chrome (Desktop) 103.0.5060.134, Lighthouse 9.6.4



Top Issues

IMPACT	AUDIT	
High	Reduce initial server response time <small>FCP LCP</small>	Root document took 829ms
Med	Avoid an excessive DOM size <small>TBT</small>	1,964 elements
Med-Low	Serve static assets with an efficient cache policy	Potential savings of 159KB
Low	Use passive listeners to improve scrolling performance	1 event listener not passive
Low	Serve images in next-gen formats	Potential savings of 948KB

Page Details



Total Page Size - 1.76MB



Total Page Requests - 71



■ HTML
 ■ JS
 ■ CSS
 ■ IMG
 ■ Video
 ■ Font
 ■ Other

How does this affect me?

Today's web user expects a fast and seamless website experience. Delivering that fast experience can result in increased visits, conversions and overall happiness.

As if you didn't need more incentive, **Google has announced that they are using page speed in their ranking algorithm.**

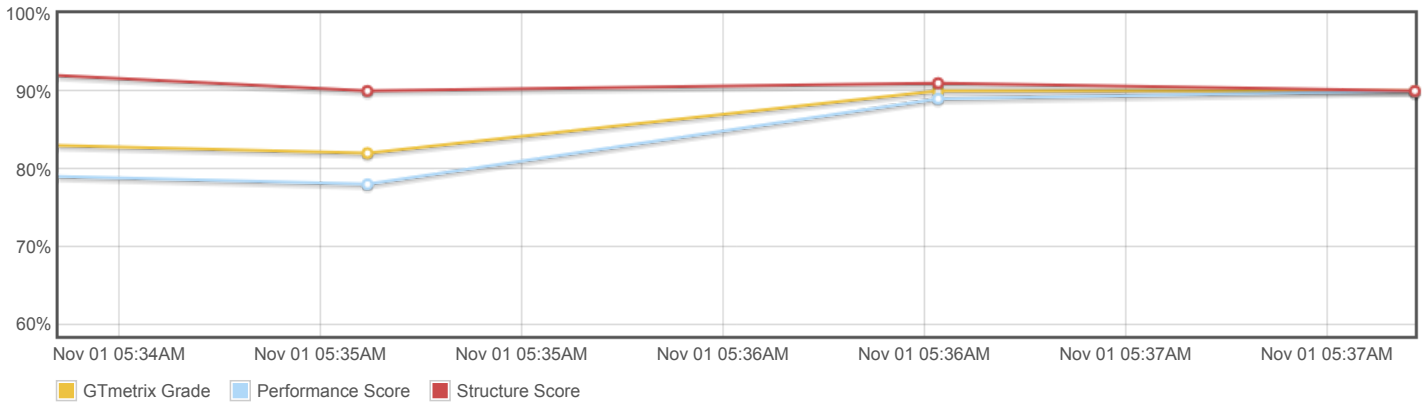
About GTmetrix



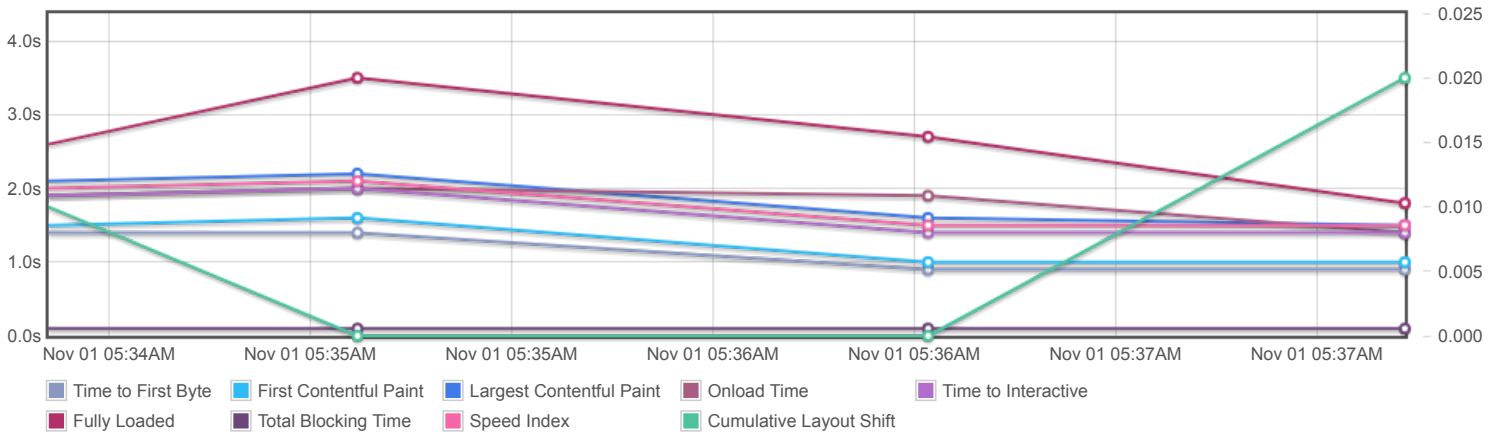
GTmetrix is developed by the good folks at Carbon60, a Canadian hosting company with over 26 years experience in web technology.

<https://carbon60.com/>

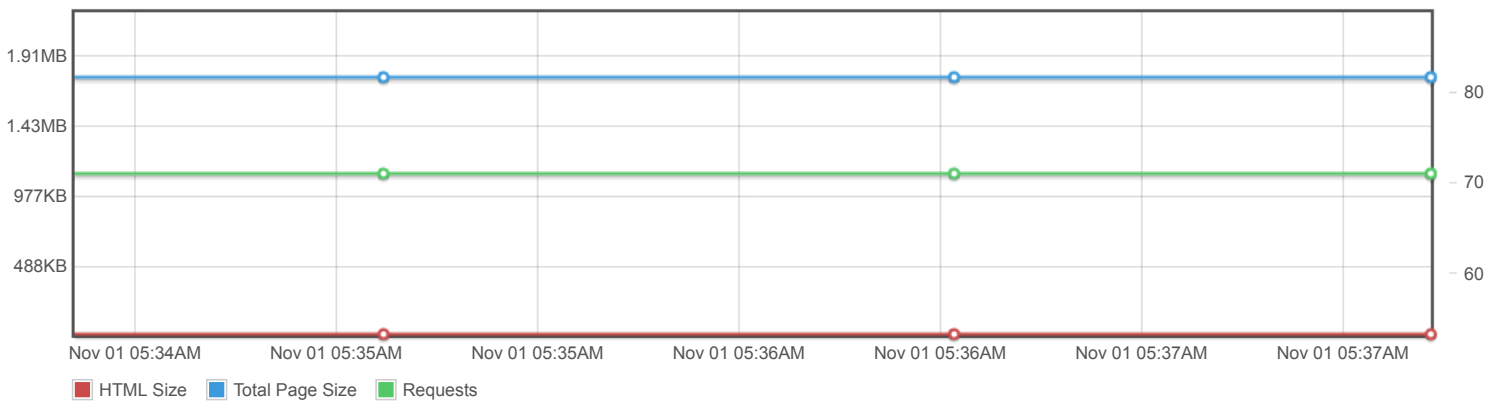
Page scores



Page metrics

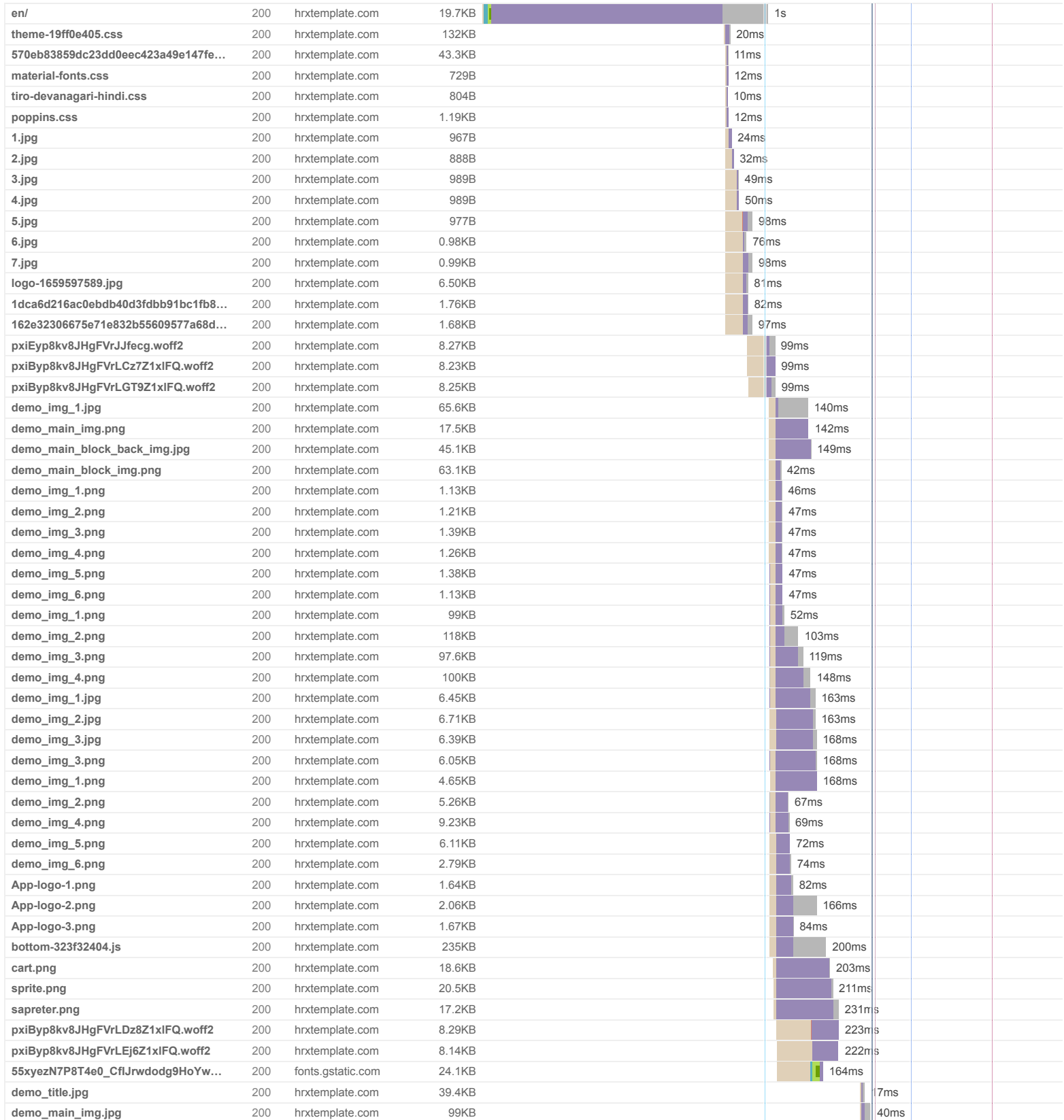


Page sizes and request counts

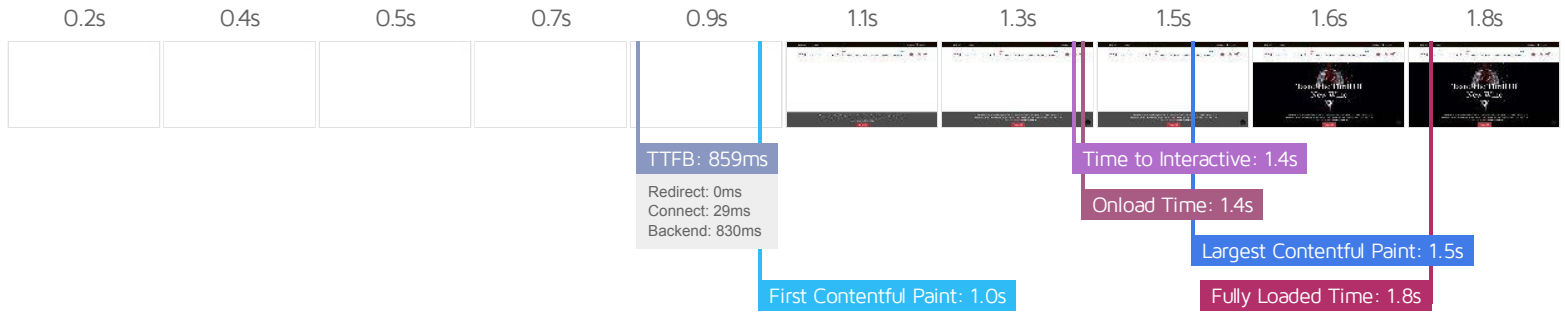


The waterfall chart displays the loading behaviour of your site in your selected browser. It can be used to discover simple issues such as 404's or more complex issues such as external resources blocking page rendering.

Duckhorn Wine Store



POST default	200	hrxtemplate.com	2.65KB				284ms
demo_img_1.jpg	200	hrxtemplate.com	18.2KB				10ms
demo_img_2.jpg	200	hrxtemplate.com	26.6KB				10ms
favicon.ico?1662625718	200	hrxtemplate.com	1.58KB				7ms
favicon.ico?1662625718	200	hrxtemplate.com	0				1ms
1.png	200	hrxtemplate.com	41.3KB				10ms
2.png	200	hrxtemplate.com	49.1KB				14ms
3.png	200	hrxtemplate.com	36.3KB				17ms
4.png	200	hrxtemplate.com	47.5KB				18ms
5.png	200	hrxtemplate.com	37.7KB				20ms
6.png	200	hrxtemplate.com	37.9KB				31ms
1_1.jpg	200	hrxtemplate.com	16.8KB				22ms
2_1.jpg	200	hrxtemplate.com	21.6KB				31ms
Menu_Banner.jpg	200	hrxtemplate.com	27.5KB				30ms
bundle-t-shirt.jpg	200	hrxtemplate.com	17.2KB				30ms
t-shirt.jpg	200	hrxtemplate.com	20.3KB				30ms
blouse.jpg	200	hrxtemplate.com	16.9KB				31ms
71 Requests		1.76MB (3.12MB Uncompressed)		Fully Loaded 1.8s		(Onload 1.4s)	



Performance Metrics

<p>First Contentful Paint</p> <p>How quickly content like text or images are painted onto your page. A good user experience is 0.9s or less.</p>	<p>OK, but consider improvement</p> <p>1.0s</p>	<p>Time to Interactive</p> <p>How long it takes for your page to become fully interactive. A good user experience is 2.5s or less.</p>	<p>Good - Nothing to do here</p> <p>1.4s</p>
<p>Speed Index</p> <p>How quickly the contents of your page are visibly populated. A good user experience is 1.3s or less.</p>	<p>OK, but consider improvement</p> <p>1.5s</p>	<p>Total Blocking Time</p> <p>How much time is blocked by scripts during your page loading process. A good user experience is 150ms or less.</p>	<p>Good - Nothing to do here</p> <p>125ms</p>
<p>Largest Contentful Paint</p> <p>How long it takes for the largest element of content (e.g. a hero image) to be painted on your page. A good user experience is 1.2s or less.</p>	<p>OK, but consider improvement</p> <p>1.5s</p>	<p>Cumulative Layout Shift</p> <p>How much your page's layout shifts as it loads. A good user experience is a score of 0.1 or less.</p>	<p>Good - Nothing to do here</p> <p>0.02</p>

Browser Timings

Redirect	0ms	Connect	29ms	Backend	830ms
TTFB	859ms	First Paint	1.0s	DOM Int.	1.4s
DOM Loaded	1.4s	Onload	1.4s	Fully Loaded	1.8s

IMPACT	AUDIT	
High	Reduce initial server response time <small>FCP LCP</small>	Root document took 829ms
Med	Avoid an excessive DOM size <small>TBT</small>	1,964 elements
Med-Low	Serve static assets with an efficient cache policy	Potential savings of 159KB
Low	Use passive listeners to improve scrolling performance	1 event listener not passive
Low	Serve images in next-gen formats	Potential savings of 948KB
Low	Avoid enormous network payloads <small>LCP</small>	Total size was 1.76MB
Low	Properly size images	Potential savings of 41.6KB
Low	Reduce unused CSS <small>FCP LCP</small>	Potential savings of 121KB
Low	Reduce unused JavaScript <small>LCP</small>	Potential savings of 170KB
Low	Eliminate render-blocking resources <small>FCP LCP</small>	Potential savings of 0 ms
Low	Ensure text remains visible during webfont load <small>FCP LCP</small>	1 font found
Low	Avoid long main-thread tasks <small>TBT</small>	3 long tasks found
Low	Reduce JavaScript execution time <small>TBT</small>	206ms spent executing JavaScript
Low	Avoid serving legacy JavaScript to modern browsers <small>TBT</small>	Potential savings of 91B
Low	Defer offscreen images	Potential savings of 153KB
Low	Avoid chaining critical requests <small>FCP LCP</small>	2 chains found
N/A	Largest Contentful Paint element <small>LCP</small>	1 element found
N/A	Avoid large layout shifts <small>CLS</small>	2 elements found
N/A	Minimize main-thread work <small>TBT</small>	Main-thread busy for 760ms
N/A	Reduce the impact of third-party code <small>TBT</small>	Total size was 24.7KB
N/A	User Timing marks and measures	